

**Rigor &
Relevance**



**Key Pieces to
CTE Success**

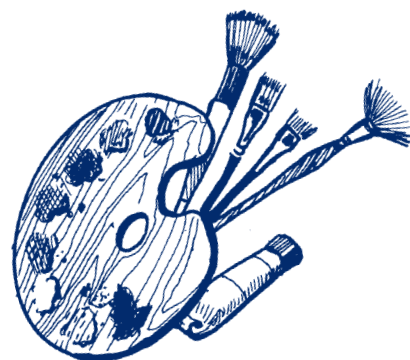


**38th Annual
Missouri ACTE Conference &
Joint Summer Career and Tech Education Workshops
Springfield, Missouri
July 23-26, 2007**



Table of Contents

<u>Pg</u>	<u>Item</u>	<u>Pg</u>	<u>Item</u>
1	Our Cover Artist: Courtney Barron	15	Certificate of Appreciation Bob Forsee
1	Missouri ACTE Past Presidents	15	Diversity Action Award - MSCA
3	A Message from Our President	52	2007 Confernece Delegates
4	General Attendee Information	53	Conference Exhibitors
5	General Conference Program		<u>Division Agendas</u>
6	Conference Opening Speaker	16	Administrators (MCCTA)
7	President-Elect Candidates	17	Agriculture (MVATA)
8	Missouri Legislators Recognized	19	Business (MBEA)
9	2007 Teacher of the Year - Michele Ray	28	Career Services (MACS)
11	2007 Outstanding CTE Educator Kelly Chapman	28	Counselors (MSCA)
12	2007 Outstanding Teacher in Community Service - Craig Evans	28	Special Needs (MSNA)
13	2007 Outstanding New CTE Teacher - Stanley Green	33	Family & Consumer Sciences (MoEFACS)
14	Certificates of Appreciation Ron Tierney Beth Norman	38	Health Occupations (MoSAHOE)
		40	Marketing (MCEA)
		43	Technology Education (TEAM)
		46	Trade & Technical (MTTA)



Our Cover Artist Courtney Barron

Courtney graduated from Moberly High School in 2007. While in high school, she attended Moberly Area Technical Center. She took business and web design with Mrs. Benoit and computer applications with Mr. Richardson. She intends to start college in the fall at Moberly Area Community College. She will study business or nursing.

Missouri ACTE Past Presidents

2005-06	Sherry Struckhoff	1992-93	Bonita Campbell	1978-79	Herman Peeper
2004-05	John Michael	1991-92	Terry Barton	1977-78	Layton Clay
2003-04	Bob Simpson	1990-91	Kenny Graham	1976-77	Jim Cornett
2002-03	Elaine Metcalf	1989-90	Del Winston	1975-76	Clarence Malcolm, Jr.
2001-02	David Twente	1987-88	Katie Graves	1974-75	Dr. W. R. Miller
2000-01	Linda Miller	1986-87	Ken Cobb	1973-74	Lucille Johnson
1999-00	Mark Sponaule	1985-86	Joe Burke	1972-73	Ray McClure
1998-99	Lois Green	1984-85	Carol Kellett	1971-72	Donald Lang
1997-98	Don Claycomb	1983-84	Amy Young	1970-71	Wilma Sullivan
1996-97	Michael Allen	1982-83	Ron Youngs	1969-70	Wayne Wolfe
1995-96	Patricia Knowles	1981-82	Gary R. Lindquist	1968-69	Don Simmons
1994-95	Barbara Mountjoy	1979-81	Fred Linhardt	1967-68	Rose Shanight
1993-94	William J. Bunch	1979-80	Neva Maddox	1966-67	Robert H. Denker

A Message from Our President



Welcome to the 2007 Missouri ACTE Summer Conference and Career Tech Expo. I know you will find ample opportunities to access information, ideas, and products that will help you do your important work in education. If you need help, please come by the Missouri ACTE information table beside registration.

If you are a new teacher, be sure to mark your program to attend the New Professionals Reception before the Opening General Session on Tuesday. There are some great things planned especially for you. The other members not only want to make you feel welcome but really want to help you be successful in our profession. This Conference will be one of the best opportunities for Professional Development you will have access to during your career.

I hope everyone will attend the Opening Session and visit the exhibitors. Missouri ACTE is so fortunate to have such a large group of businesses that are supportive of our organization goals. Without them, the cost of this Conference would have to increase. Please take advantage of this great opportunity to visit with them.

I am thrilled that Dr. Harry Wong will be presenting an extended training session after the Opening Session. This high-quality Professional Development will help you meet the Carl Perkins Legislation requirements. It is important that each of us search the Conference program for the best workshops to improve Rigor and Relevance for our own students. Dr. Wong will be building the foundation for understanding and implementation, so it is very important that we all be there.

Please consider becoming a tri-level member while you are here this week, if you haven't already done so. ACTE membership gives you, as an educator, a legislative voice in Washington. We are at a very important place in the history of CTE, as high school reform is sweeping the nation. The dues are really minimal when you consider the great benefits.

Putting this Conference together is a really big job. The program planners in each division and the Missouri ACTE committees have been working for months. Our Executive Director, Donna Vossion, deserves a huge thank you for her endless hours of work on our behalf. Please join me in thanking these people when you see them this week.

Lee Iacocca is quoted as saying, "In a completely rational society, the best of us would be teachers and the rest of us would have to settle for something else". It has been such a privilege to represent this wonderful group of "the best of us" this year. I will always remember the opportunities and responsibility fondly and humbly. This organization is vital to CTE in Missouri and we all need to work together to keep it strong.

Ronna Ford, President, Missouri ACTE

Check MCCE.ORG for these and other products and services for 2007-2008.

- ★ Sample Guidance Lessons and Equity Curriculum
- ★ Embedded Credit Toolkit Update
- ★ Career Directions *(MCCE's e-newsletter for Career Education)*
- ★ Career Clusters Toolkit
- ★ Programs of Study
- ★ Rigor and Relevance Workshops
- ★ Career Clusters Workshops
- ★ Breaking Traditions Award
- ★ Career Education Induction Program

Your source for innovation in education!

T.R. Gaines 302 • UCM • Warrensburg, MO 64093
(660) 543-8768 • (660) 543-8995 (fax)





Get an online master's *that means business.*

Business and marketing education is vital for success—especially when you're in the business of teaching.

College of Education
Department of Learning, Teaching and Curriculum

Balance your professional and personal life while obtaining a **master of education degree** ... ONLINE!

Working educators:

- Complete the course work required for both business and marketing education certification.
- Increase your career opportunities and professional options.
- Be an important contributor to the economic future of Missouri, the nation and the world.

Make a difference in the lives of students ...

With an M Ed that focuses on business and marketing education, you can help your students be prepared for the high-tech, high-wage occupations of the future.

Visit our booth in the *Missouri ACTE summer conference Exhibit Hall* July 23-26 and learn more about this **NEW** online degree program.

MUDirect.missouri.edu/mu/mac7.html

University of Missouri–Columbia

General Attendee Information

Registration

All persons who attend the Conference must be registered. You must wear your name badge at all times for admittance into meetings and the exhibit area.

General Session

The Missouri ACTE Opening General Session will be held at the Springfield EXPO Center (635 St. Louis Street - Hall C) Tuesday, July 24 at 10:30 a.m.

Cast Your Vote!

Ballots boxes are located at the registration area (Springfield EXPO Center; 635 E. St. Louis St.), the Missouri ACTE Opening General Session, and in the Division Meetings. Cast your ballot before noon on Wednesday, July 25.

Exhibits

All exhibits will be open to attendees between the hours of 3:00 p.m. and 7:00 p.m. on Monday; 8:00 a.m. to 3:00 p.m. on Tuesday. You are encouraged to tour the exhibits at the Springfield EXPO Center. Many new products, services and supplies will be on display. Representatives are on hand to answer any questions you may have.

Don't Miss the Fun!

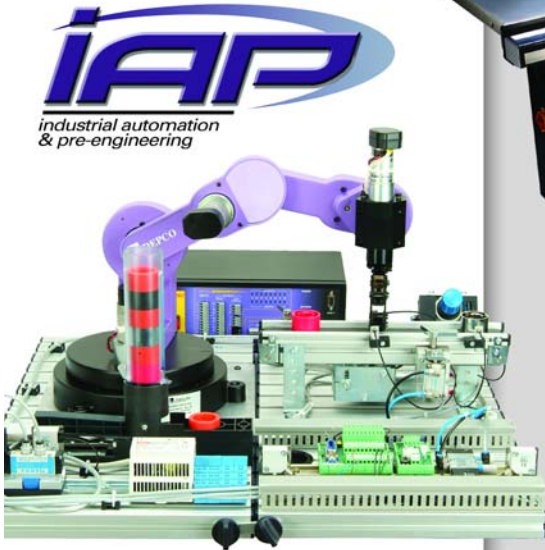
Be sure to attend the All-Division Social ...

Wednesday, July 25

8:30 p.m.

The Oasis

2550 N. Glenstone Ave.



DEPCO, LLC

1.800.767.1062

www.depcolc.com



Missouri ACTE 2007 General Conference Program

July 23-26, 2007 • Springfield, MO

Monday, July 23

9:30 a.m.

Missouri ACTE Board of Directors Meeting
University Plaza - Oklahoma Room

3:00 p.m. - 7:00 p.m.

Missouri ACTE Conference Registration Open
Springfield EXPO Center - Hall A&B
635 E. St. Louis St.

3:00 p.m. - 7:00 p.m.

Missouri ACTE Exhibits Open

Tuesday, July 24

Springfield EXPO Center - Hall A&B
635 E. St. Louis St.

8:00 a.m.

All Missouri ACTE Committee Meetings
University Plaza Convention Center - Arizona Room

8:00 a.m. - 3:00 p.m.

Missouri ACTE Exhibits Open
Springfield EXPO Center - Hall A&B
635 E. St. Louis St.

8:00 a.m. - 5:00 p.m.

Missouri ACTE Conference Registration Open
Springfield EXPO Center - Hall A&B
635 E. St. Louis St.

9:15 a.m. - 10:15 a.m.

Missouri ACTE New Professional Reception
University Plaza Convention Center
Arizona/Georgia Rooms

Tuesday, July 24 (Continued)

10:30 a.m.

Missouri ACTE Opening General Session - Part I

Springfield EXPO Center - Hall C
635 E. St. Louis St.

Speaker: Dr. Harry K. Wong

Note: After the Opening Session - Part 1, a complimentary box lunch is available for attendees - Springfield EXPO Center - Hall A&B - 635 E. St. Louis St.

1:30 p.m. - 3:00 p.m.

Missouri ACTE Opening General Session - Part 2

Springfield EXPO Center - Hall C
635 E. St. Louis St.

Speaker: Dr. Harry K. Wong

Wednesday, July 25

3:30 p.m.

House of Delegates Meeting
University Plaza Convention Center - Iowa Room

8:30 p.m.

Missouri ACTE All-Division Social
The Oasis - 2550 N. Glenstone

Thursday, July 26

1:00 p.m.

Missouri ACTE Board of Directors Meeting
University Plaza - Colorado Room

2007 Conference Opening Speaker



Dr. Harry K. Wong, Ed.D.

Dr. Harry K. Wong is possibly the most motivating, exciting and dynamic speaker on classroom management and education today.

His expertise is in classroom management and student motivation. Although Dr. Harry Wong regards himself

as "a plain old classroom teacher," his record shows that he has been an excellent teacher who has shared his success with thousands of teachers internationally. Because of his achievements, Dr. Wong has been awarded the Outstanding Secondary Teacher Award, Science Teacher Achievement Recognition Award, Outstanding Biology Teacher Award, and Valley Forge Teacher's Medal. He was also the subject of a story in Reader's Digest.

During more than 33 years in the classroom, Dr. Harry Wong has developed methods which resulted in his having a zero dropout rate, no discipline problems, a 95% homework turn-in factor, and the ability to demonstrate master level learning by each of his students. His students won over 200 awards.

Dr. Harry Wong's classroom management presentations are of universal appeal. Business people, homemakers, students, and people from all walks of life will profit personally from his message of self-motivation. As one meeting planner said, "In my 30 years of being in public education, I have never seen or heard anyone have the impact that your presentation has had on our teachers and administrators."

Dr. Wong will be the Opening Speaker at the Missouri ACTE Summer Conference on Tuesday, July 24, 2007. Come hear this remarkable speaker for yourself!

"My experiences at Northwest Missouri State University have been fabulous. The instructors really care about the quality of education our students are receiving and focus on solutions as opposed to obvious issues. I could not have chosen a better university to continue my education."

Eric Greely, Business Instructor/Interim Administrator
Liberty High School

Specialist Degree in Educational Leadership
Student in Northwest's Education Specialist: Superintendent Program
Hurricane Katrina survivor with master's degree
from Southern University in New Orleans

Earn your graduate degree from Northwest Missouri State University

- Maryville
- Kansas City
- St. Joseph
- Kirksville
- Chillicothe



Graduate School Office:
(660) 562-1145 or
gradsch@nwmissouri.edu
nwmissouri.edu



Meet The 2007-08 President-Elect Candidates

Both of this year's President-Elect candidates belong to the Missouri Association for Career Services; both have demonstrated their dedication to Career and Technical Education and the Missouri ACTE.



Norma Ogletree

Norma Ogletree's philosophy of Career and Technical Education is: "... it is the backbone - or perhaps the whole skeleton - of the workforce animal. In addition to the hands-on skills needed by today's workers, the rigorous academic standards required by industry are incorporated into CTE programs of study. Most, if not all, jobs requiring a bachelor's degree have a

technical component. CTE prepares students for work immediately following high school and CTE prepares students for a seamless transition to post secondary and post baccalaureate education."

Currently, Norma Ogletree serves as Director of Career Services at Missouri State University - West Plains. Holding a M.S in Guidance Counseling from Missouri State University and a B.S. in English from Evangel University, Norma also holds several Lifetime Certifications from the State of Missouri ... 7-12 Counselor, K-12 State Psychological Examiner, 7-12 English, and 7-12 Journalism.

She is a member of the Association for Career and Technical Education (ACTE), Missouri ACTE, Missouri Association for Career Services (MACS, formerly MPA), Missouri School Counselor Association (MSCA), Southwest Missouri School Counselor Association (SMSCA), the National Association of Colleges and Employers, and is a lifetime member of the National Education Association (NEA).

Norma takes her professional memberships very seriously. She has served on the Missouri ACTE Public Information Committee from 2005 to present; headed the Guidance Division Planning Committee for the Missouri ACTE Summer Workshop and Conference for three years; presented workshops at state and district meetings; edited and written articles for two of MSCA's publications, *The Counseling Interviewer* and *The Counseling Connection*; been a member of the SMSCA Governing Board since 1985, serving as President-Elect, President, and Past President; served two terms as MSCA Post-Secondary Vice President; and served on the Planning Committee for MSCA's Fall Conference.

Working at Linn State Technical College, first as a design drafting instructor from 1989 to 1995, then Assistant Director of Business and Industry Relations from 1995 to 1999 and, since 1999, as Career Services Coordinator, Glenda Jordan-Whitney has impacted the lives of over 3,500 Career and Technical students and graduates.



Glenda Jordan-Whitney

Her commitment to CTE doesn't end there. From past to present, it has been shown through her membership and leadership in professional associations, including her membership in the Missouri Association for Career and Technical Education, (Missouri ACTE, formerly Missouri Vocational Association), from 1990 to present; membership in the Missouri Association for Career Services, (MACS, formerly Missouri Placement Association), from 1995 to present; participation on the MACS Executive Board from 1999 to present, serving as President of the MACS from 1999 to 2002; coordination and management of the Career Services Advisory Council from 2000 to present; and position as Steering Chair for the State SkillsUSA Leadership contests from 2003 to present.

Her efforts have been recognized with the 1991-92 Service Above Self Award and 1993 Leadership Award from Linn Technical College, 1995 Appreciation Award from the Missouri Department of Elementary and Secondary Education and Project Enter; Excellence Award from Statewide Job Placement/Innovative Solutions for Career Educators for each year from 1996 to 2001; 1998 nomination for Who's Who Among America's Teachers; 2000 Missouri Placement Coordinator of the Year; and a plaque from the Missouri SkillsUSA in 2004.

Glenda holds an Associate of Technology Degree from Linn Technical College, a Certificate of Achievement from the New Teachers Institute at the University of Missouri - Columbia, and a Bachelor's of Science Degree in Business Management from William Woods University in Fulton, MO. She is a 1999 graduate of Leadership Jefferson City.

Missouri Legislators Paving the Way for Career and Technical Education



Representative Kathlyn Fares (R-91)

includes Glendale, Oakland, Shrewsbury and most of Webster Groves.

Prior to her becoming a state representative she worked in the family business, Fares Interior Furnishings, which specializes in upholstery and antique furniture restoration. She has previously worked in various other business settings throughout the St. Louis area and as a secondary school teacher in both the Riverview Gardens and Webster Groves school districts.

Since 2003 Rep. Fares has chaired the House Appropriation-Education Committee. She was appointed to the 2003 Missouri Commission on the Future of Higher Education and

Career education has benefited from having a strong advocate like Rep. Fares serving as chair of the House Appropriations Committee on Education. A conversation with Rep. Fares early in her time in the legislature demonstrated her enthusiasm for the role of career education when she shared personal knowledge of success stories. An educator at heart, Rep. Fares has education as the focus of her energies in the legislature. .

Rep. Kathlyn Fares (District 91), a Republican in the Missouri House of Representatives since 2001, represents part of St. Louis County, which

was chair of the 2003 St. Louis Regional Legislative Caucus. She sits on the Secretary of State's, Library Development Council and served on the Governor's 2006 Math and Science Alliance workgroup. She serves on the Missouri Math, Engineering, Technology, and Science Coalition (METS).

Rep. Fares is a member of the Webster Groves-Shrewsbury Area Chamber of Commerce, the Webster Groves Rotary & Lions Clubs and has served on community advisory committees including Affton Community Alcohol and Drug Free Schools, Kirkwood's PAT, and Webster Groves High School. She is a Webster Groves/Shrewsbury Make a Difference Day steering committee co-chair. She is also Boy Scouts of America and Exploring leader trained and a former advisor.

Rep. Fares attended Central Methodist College and received a Bachelor of Science in Education degree from Central Missouri State University.

As a newly elected member of the Senate, Senator Shoemyer has defined himself as someone who doesn't hesitate to speak up for issues important to his district. He was instrumental in defeating a bill that would have been very damaging to career education this past session. We look forward to this kind of responsiveness in the remainder of his tenure in the legislature.

Senator Wes Shoemyer represents Senate District 18, which covers 13 Northeast Missouri Counties.

Elected to the House in November 2000 and the Missouri State Senate in 2006, Senator Shoemyer has owned and operated a family farm in Monroe County for over 20 years.

A recipient of the American Farmer degree from FFA, Senator Shoemyer is a member of the Missouri Farm Bureau, Monroe County Democratic Club, NEMO Grain Processors, an ethanol production facility; National Farmers Organization and Missouri Farmers Union, state president; Institute for Rural America, president; Ozark Mountain Pork Processing Plant, member of Premium Ag and has served as vice president for the Monroe County Farm Bureau.

He attends Oak Grove Baptist Church and is a member of Shelbina Lodge #228.

A 1979 graduate of South Shelby County R-IV High School, Senator Shoemyer attended the University of Missouri-Columbia.

Born March 30, 1961 in Hannibal, Senator Shoemyer lives in Clarence with his wife, Cheryl. They have four children: Wendy, Laura, Amy and Andrew.



Senator Wes Shoemyer (D-18)

Missouri ACTE 2007 Teacher of the Year - Michele Ray



Michele (Shelli) Ray

It's hard to know where to begin describing all the ways Michele (Shelli) Ray, the Marketing/Business Educator at Blue Springs South High School (BSSHS), deserves the Missouri ACTE 2007 Teacher of the Year award. Her letters of recommendation were filled with wonderful comments about her achievements, as well as her personal influence on the writers' lives. Perhaps it's best to share a few:

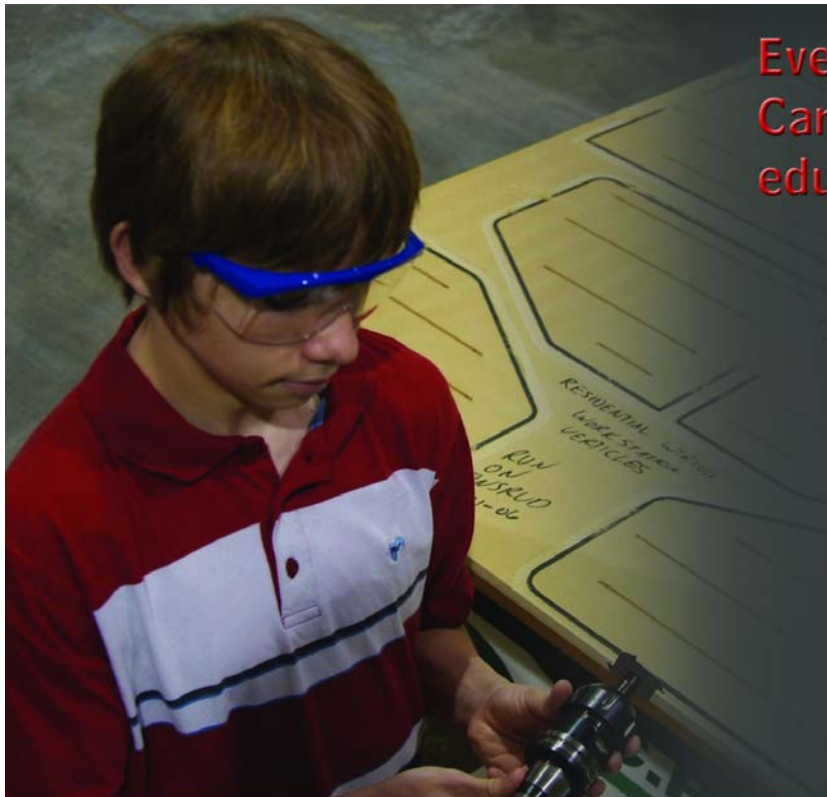
From Charlie Belt, Assistant Principal at BSSHS: *"Shelli's work in the classroom is exemplary; she engages her students with challenging lessons and hands-on learning activities. Shelli's personality enables her to make relational connections with her students very easily. Shelli has always gone above and beyond in her involvement outside the classroom as well. She sponsors DECA at [BSSHS] and takes teams of students to regional and national competitions.*

Shelli also sponsors the Touch of Silver and the South Side Steppers dance teams. These extracurricular activities require many extra hours of work and commitment, of which Shelli gives willingly. ... She is a well-respected member of our faculty who is able to befriend and relate to all members of our staff, both certified and classified."

From Ms. Jann Link, a parent: *"[Ms. Ray] presents professional problem solving, creative thinking and practical application to the students in the environment of a 'Business World' in marketing and inspires them to do their very best. ... She truly is teaching all her students the values of marketing in such a manner and with such professionalism that they will continue their desire to learn and become successful in this field. As a mother we must teach our children to fly on their own, as a teacher Ms. Ray is teaching our children to do the same"*

From Taylor Hill, a former student: *"Having known Shelli for over seven years I have had the opportunity to be taught by her, work with her,*

"Michele Ray" >p10



**Everything you need for your
Career and Technology
education programs including:**

Autodesk
Dimension
Epilog Laser
Mastercam
Nida Electronics
Industrial Automation -
Pre-Engineering
CNC Plasma
SawStop



DEPCO, LLC

1.800.767.1062 www.depcolc.com

Michele Ray *(from page 9)*

and see her truly make a difference in the lives of others. Her outstanding and incomparable commitment to the students she interacts with sets her apart from any educator I have ever known.

"Aside from her dedication and commitment to her students, she exemplifies a willingness to go the extra mile for others. She is driven by the success of her students, not the comfort of job security. It is her passion for the successes of others that distinguishes her from any other educator in the field. It is rare to find a teacher that holds such passion, but it is even rarer to find one that upholds those same qualities while maintaining an energetic, exciting and still structured learning environment. ... Shelli has truly touched my life in more ways than one. She began as my marketing teacher, and she grew to be a true inspiration to the way I run my business, and the way I care for my family and friends."

From Keith Maxey, Principal at BSSHS: "Shelli consistently works to enhance the Marketing program at [BSSHS]. [She] promotes interest in vocational programs at the local level in her work with area businesses. ... In addition, Shelli provides leadership at [BSSHS] developing the DECA program. She consistently has students compete at the State and National level. In addition, she sponsors the dance

team at school and is willing to take on a variety of tasks. Shelli is nominated yearly as a teacher of the year candidate and is truly an outstanding professional."

Shelli became a DECA Professional member in 1986, a member of Missouri ACTE and MCEA in 1986, and a member of ACTE in 2004. As with her involvement with her students, Shelli has taken her membership in these organizations seriously and donated an enormous amount of time to them. She has served as MCEA Secretary, 1992-93; MEA Secretary, 1991-92; MEA Board Member, 1988-90; DECA Board Member, 2004-06; DECA Past President; and MCEA President-Elect, 2006-07.

We are very lucky to be able to count such a fine educator among our members and congratulate Shelli on her well-earned award.

*"She is driven by the
successes of her students,
not the comfort of job
security."*

QUALITY. EXPERIENCE. SUCCESS.



LINN STATE

Technical College

An A+ Eligible College

1-800-743-TECH

www.linnstate.edu

LINN • JEFFERSON CITY • MEXICO

Missouri's Free-Loan Library for Career Education

Videos, books, games, kits, DVDs and CDs
are available in a number of subject areas including:

**Agricultural Education • Adult Education
Education • General Resources
Business Education
Marketing Education • Health Sciences
Technology Education
Trade & Industrial Education
Guidance & Placement • Special Needs
Careers & Employment • Equity and Diversity
Family & Consumer Sciences**



Resources
MCCE

To reserve resources, visit
resources.mcce.org
or call

800.392.7217

Missouri ACTE 2007 Outstanding Career and Technical Educator - Kelly Chapman

As Gary Bartle, Executive Director for the Mid-Missouri Area Health Education Center puts it, "While Kelly will never draw attention to herself, she is effective in moving behind the scenes and will give the credit to those around her."

Even listing Kelly Chapman's job title, Vocational Resource Educator (VRE) and Counselor at the Lebanon Technology and Career Center (LTCC), doesn't begin to tell what's really going on behind the scenes. While she was hired as VRE, budget cuts in the District left the position of Career Education Counselor vacant. Kelly saw an area where the students' needs were in jeopardy and she stepped up to fill the gap. She now works both full-time jobs and, according to her letters of endorsement, manages to perform each of the jobs' duties with great skill.

Kelly's nomination came with almost four pages of information relating to her "Professional Memberships and Activities, Professional Contributions, Education and Experience Background, and Civic/Community Involvement," which would be impossible to list here. She is not one of those volunteers who lends her name to a group, but doesn't lend her time. As the Director of LTCC Gail Holcomb says, "Kelly is an asset to any group effort. She is a good listener, provides good ideas, and knows how to put ideas into a meaningful communication package."

B.J. Stockton, who supervised Kelly during her tenure at the Missouri Department of Elementary and Secondary Education (DESE), adds his endorsement of her abilities when he says, "Kelly was one of the principal architects of the performance measures now used in Missouri under the Carl D. Perkins Vocational and Technical Education Act of 1998. ... Following the acceptance of Missouri's State plan,

Ms. Chapman was instrumental in implementing all of the performance measures from the state perspective as well as providing technical assistance to local sub-recipients of these federal funds ... [she] demonstrated her ability to take highly complex material and present it to schools in a comprehensible, cogent and lucid fashion."

Laura Hendley, Director of the Sikeston Career and Technology Center told us that Kelly "creatively tackles any problem and does not quit until she finds a

workable solution." Although this skill has served her well professionally, it is perhaps most strongly demonstrated in her relation to her students. According to Ms. Hendley, Kelly "has provided dedicated support to students who need her services. No task is too challenging for her to tackle if it benefits her students. She has provided opportunity for students with little or no resources for cleanliness at home to have showers daily at her school. She has used her contacts with the community to help students seek and find employment. She has given her students money if needed, bought them clothing, washed their clothing and done what ever was needed to meet their individual needs."

Peggy Starnes, the parent of a student who was diagnosed with a life-threatening cancer while in college, credits Kelly with her son's ability to complete and pass his class. "Our family will always be indebted to Kelly for her compassion and willingness to work with our son, showing him dignity and respect through the most difficult time of his life."

It is apparent that Kelly has the skills, intelligence, grace, and talent needed to be named the Missouri ACTE 2007 Outstanding Career and Technical Educator.

"She creatively tackles any problem and does not quit until she finds a workable solution."



Industrial Arts Supply Co.
5724 W. 36th St.
Minneapolis, MN 55416
888-919-0899
WWW.IASCO-TESCO.COM



10-B Therm-O-Vac **#66M Injector**



CO₂ Cars **Pewter Casting**

Plastic Machines,
Estes Rockets,
Balsa sticks,
Fiberglass,
Acrylic Electron-
ics kits, Co2 Cars,
Mold Making,
Airplanes, Pewter,
and more.
Free Catalog -
info@
iasco-tesco.com

Missouri ACTE 2007 Outstanding Teacher in Community Service - Craig Evans

A four-walled classroom is just not large enough to hold Craig Evans' enthusiasm for agriculture. As an Adult Agriculture Instructor at the Lebanon Technology and Career Center (LTCC), Craig has worked both inside and outside the traditional bounds of the classroom to promote agriculture and its future.

As a member of the Lebanon Area Chamber of Commerce, Craig helped organize the Farm Fest, a two-day farm show for farmers and agri-business. He also took part in the initial planning meeting for the America's Heartland Economic Partnership which helps finance small business start-ups in his local community.

The Laclede County Fair Board would surely be hurt if Craig were to ever curb his enthusiasm. He has helped to organize and supervise one of the largest youth events in the community, the Laclede County Fair, which has over 200 youth exhibitors each year. The highlight of the fair is the market animal "Sale of Champions" where over \$100,000 is returned to the youth of the community.

According to Glenn Raef, Laclede County Western District Commissioner and Fair Board President, "Craig is truly an asset to our agriculture community. [He] spends hours upon hours of his own time helping the kids of this community with their livestock project for the local fairs. ... Craig has a love for agriculture and for his community that goes beyond explaining. ... [He] focuses on the young people of this community because he knows the future of agriculture is at stake, and with his knowledge and his 'common sense' attitude this community would suffer greatly without him."

But Craig's focus on agriculture isn't targeted only to the youth of his community. Randy Golliher with MFA Agri Services says, "The agriculture industry in all aspects is rapidly changing. Therefore, it is a given that our local youth and adult educational programs thrive to keep agriculture a major part of our community. As the adult educator, Craig Evans is actively playing a beneficial role in the agriculture industry. [He] keeps our local agriculture leaders and producers abreast on local

and national agriculture events and issues. ... To promote agriculture further, [he] has evening educational meetings and activities allowing opportunities for producers that work on or off farm to participate. Another great benefit is the hands on experience that Craig brings to the producers, along with allowing the producers hands on experience with livestock or computer record keeping."

Warren Hoffman, a local farmer who has known Craig since he was a young boy in 4H says, "I have watched him grow up into a very outstanding person. ... Where will you find Craig? He will be helping someone by meeting their needs what ever it might be. ... He has

helped to improve beef, dairy and swine operations on a one to one basis."

If an evening class doesn't work for a producer or the producer's problem is specific to his farm, Craig makes the trip out to the farm to work, one-on-one, with the producer until, as Warren puts it "he finds the answers to

your problems and then will work with you to get it right."

In addition to being a member of the Lebanon Area Chamber of Commerce and the Laclede County Fair Board, Craig is also a member of the University of Missouri Extension Council through which he has hosted a number of workshops for kids in 4H. As an advisor to the Lebanon Ag Alumni, Craig has helped raise funds which provides over \$500 worth of support each year for the Lebanon FFA. He is a member of the Lebanon Education Foundation Grant Selection Committee and has assisted in the selection of worthy proposals for nearly \$40,000 in grant funds. He is a member of and President-Elect for the Tri-County Cattlemen's Association and has helped them raise over \$4,000 each year, with 100% of the funds going to scholarships for college-bound students.

In 2004, Craig received a Certificate of Appreciation from the Lebanon Area Chamber of Commerce and a Teacher Appreciation Award from the Lebanon Agriculture Department. We are pleased to name Craig Evans as the 2007 Missouri ACTE Outstanding Teacher in Community Service.

*"He will work until he finds
the answers to your problems
and then will work with
you to get it right."*

2007 Outstanding New Career and Technical Teacher - Stanley Green



Although Stan Green, Lebanon Technology & Career Center (LTCC) Machine Tool Instructor, has not been in the field of education for long, his impact is already being felt by both the students he has taught and the staff he encounters. Steve Rhoads, Stan's former teacher and Adult Education Director at LTCC says it best when he says, "Stan is willing to go the extra mile to benefit students."

When it became apparent that his students were losing valuable instruction time by waiting for a ride, Stan voluntarily became a licensed school bus driver so he could transport his students to the Ozarks Technical College's lab. And, he has employed that "hidden talent" to assist the lead advisor by transporting students to SkillsUSA activities and contests.

But his talents are by no means limited to driving. He continually looks for new ways to teach, recognizing that not all students respond to one method of instruction. He is a strong supporter of MAX teaching and, according to Rhoads, "has paved the way here at [LTCC] in adopting MAX teaching in his manufacturing program. He has also been a leader to other faculty members by modeling MAX teaching strategies to them."

*"Stan is willing to go
the extra mile to
benefit students."*

As a further testament to his belief in his student's education, when Stan realized he needed to improve some of his own manufacturing skills, he enrolled in welding and CNC programming training. Again, this was all in an effort to put his students and their needs first.

We are not the first to recognize Stan's talents. He was the recipient of the SkillsUSA Mid-America Outstanding Chapter Lead Advisor in October, 2004 and the SkillsUSA Missouri Leadership Conference Outstanding Chapter Lead Advisor in September, 2006.

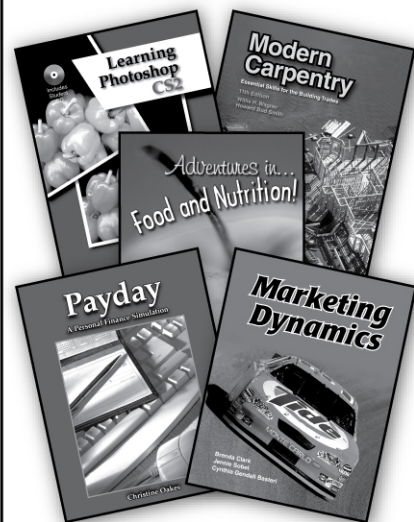
Stan has been a member of Missouri ACTE, MTTA, MSTa and a Professional Member of SkillsUSA since August, 2002; as well as a member of ACTE since August, 2003.

While Stan's career as an educator will obviously be bright, the future for his students will be even brighter having had the distinct advantage of an educator who continues to "think outside the box," improve his own skills, and share those skills with students and staff. Congratulations, Stan, for a well-deserved award.

G-W Knowledge

G-W textbooks combine authoritative content with relevant illustrations and engaging design to give your students the edge to learn important life skills. G-W teaching packages provide PowerPoint® presentations, ExamView® test generators, lesson planning aids, and abundant teaching resources to give you the edge in presenting hands-on, minds-on education. Get the edge with Goodheart-Willcox products!

The *edge* for success!



Call today for a free catalog
or visit us online.

1-800-323-0440 • www.g-w.com
custserv@g-w.com



Goodheart-Willcox Publisher
18604 West Creek Drive
Tinley Park, IL 60477-6243

Certificate of Appreciation - Ron Tierney

Ron Tierney is lead instructor at the St. Louis Carpenters Joint Apprenticeship Program (CJAP) and, according to Mark Fuchs, Coordinator, CJAP, "there is no one who has more patience and diligence dealing with students on a one-on-one basis than he."

James Duane, Director of Workforce Development for RCEW echoes that sentiment when he writes, "Ron has demonstrated the extra effort to assist those individuals who have had a difficult time in school. A lot of people might just skip over these struggling students. Ron finds satisfaction in finding ways to help students through their situations."

Ron continually tries to improve the educational environment for both student and staff. John S. Gaal, Ed.D., Director of Training and Workforce Development for the Carpenters' District Council of Greater St. Louis, AFL-CIO, says, "To be sure, Ron single-handedly transformed the Carpentry Trade & Technical workshops - at the past two summer conferences - into

the highest quality professional development in the 20+ years of my attendance. Mr. Tierney's dedication to continuous improvement is just one aspect of his leadership style that has benefited the St. Louis CJAP over the past decade. More importantly, his willingness to share best practices with other industry professionals is not only a sign of confidence but a testament to his commitment to improving training and employability for both secondary and post-secondary CTE students."

In large part, Mr. Fuchs credits Ron's efforts with the successful working relationships JCAP shares with St. Louis Community College, Jefferson College, the Regional Center for Education and Work (RCEW) and ACT.

For his dedication to his students, his craft, his fellow instructors and the industry as a whole, Missouri ACTE is proud to provide its Certificate of Appreciation to Ron Tierney.

Certificate of Appreciation - Betty Norman

Betty Norman, a Workforce Investment Act (WIA) Career Counselor for the Lake Ozark Employment Services (LOES), has been an invaluable asset to the Lebanon Technology and Career Center (LTCC). Since the VF Jeanswear (Lee) Company closed in Lebanon three years ago and left over 800 people unemployed, Betty has worked diligently to help these adults receive training for new careers.

Whether it was help with tuition, child care, gas, clothing or medical care, Betty has worked with LOES and the WIA to fill the needs of "her" students. These efforts have resulted in almost \$130,000 being given to help 57 students over the last four years. The recipients of these funds have been enrolled in TLCC's Practical Nursing, Welding, Machining, Early Childhood Education, Collision Repair, Automotive, and/or Business Technology programs.

In addition to working with adults, Betty has focused her energy on the youth. Through her strong ties to the business community, Betty has been able to pair eligible students with an appropriate job, resulting in a tremendous benefit to both the student and the business.

If a student is struggling to make the grade or having difficulty keeping up, Betty has arranged for tutors to help these students keep moving toward their educational goals.

As Peggy Starnes, a Workforce Development Specialist has said of Betty, "She's helped others with kind words and deeds in her profession through personally counseling them to guide them in a career or educational path. She has worked with those who have been downsized, laid off, and some that the system has just forgotten."

Betty is a well-deserving recipient of Missouri ACTE's Certificate of Appreciation.

Certificate of Appreciation - Bob Forsee

Bob Forsee's dedication to the Supermarket Careers program at the Rolla Technical Institute (RTI) began long before he retired as a Graphic Arts teacher and has carried over into his retirement. "Mr. Forsee sees these children with disabilities through the eyes of an artist," wrote Helen Adams Richardson, Supermarket Careers Coordinator/Instructor. "Through the eyes of an artist, the uniqueness of each individual is recognized, appreciated, and celebrated. When Mr. Forsee worked at R.T.I. he would stop by the Supermarket usually two times a day for a soda or juice and during each visit he would talk with the students even if he was in a hurry. He learned all of their names and something specific about them so that he could talk to them and make them feel as special as they are. No matter what they were doing, he would show interest, genuine interest. The students respect Bob so much that one of the boys bought him a soda one day with his lunch money. Buying "Bob Hope"

as they called him, a soda was more important than eating lunch. Often when he would come into the store you would see a crowd of students around him."

You might imagine that retirement and a round trip of almost 200 miles would slow down Bob's commitment to these students. You would be wrong. Bob still takes all the pictures, designs the format and produces the annual video highlighting the year's Supermarket Careers' activities for the enjoyment of the students, their parents, employers, RTI faculty, school board members and school district administrators.

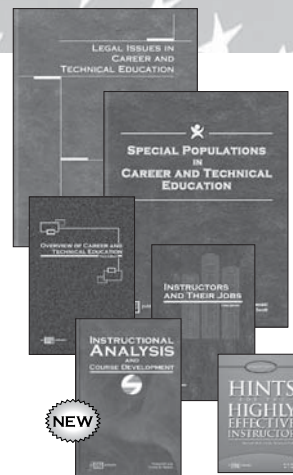
The Missouri ACTE Certificate of Appreciation is a natural fit for this man who, according to Dr. Janece Martin, Director of Vocational Programming for the Rolla Public Schools, "helps these unique students to see themselves in a very positive venue, which is a first time experience for many of them."

Diversity Action Award - Missouri School Counselor's Association



The Missouri School Counselor's Association (MSCA) has worked diligently to promote diversity. Its internal structure includes a Diversity Chair in each of its 12 district organizations throughout the state who provides information and serves as a resource for their District and others. The State Diversity Chairperson meets with the District Diversity Chairs where the team discusses diversity issues, shares event ideas and successes, and plans a curriculum for the Fall Conference. At the Fall Conference, counselors gather at the "Bring 'N' Sling" to exchange successful diversity activities, and brainstorm about future District plans. In addition, many MSCA members were involved in writing a new, comprehensive guidance curriculum which has already been adopted by many school districts in Missouri. Congratulations to our hardworking counselors!

Prepare for the Challenges of Career and Technical Education



American Tech's Professional Education series addresses important issues in education from teaching methods to legal issues. Texts are written by knowledgeable authors from the career and technical education profession.

Educators are challenged every day as social and economic issues change. Acquiring a wide scope of knowledge is vital to the success of administrators and teachers of career and technical education programs.

American Tech also provides textbooks and instructor materials for some of today's most desired technical skills.

Call today for your
free 2006 catalog.



800-323-3471

YOUR PARTNER IN LEARNING



american technical publishers, inc.
1155 West 175th Street • Homewood, IL 60430-4600
708.957.1100 • Fax 708.957.1101

